



# Residential interior and architectural design portfolio

# We are the G.A Group

We are a collection of design companies, who have been creating award-winning experiences for over 30 years.

We specialise in luxury hotel interior design, residential interior design, master-planning, furniture and product design, branding, graphic design and communications.

Our global team comprises a committed, 160-strong group of world-class designers, architects, strategists, project managers and creatives, who work out of our London, Kuala Lumpur, Budapest and Shanghai offices.

We are united by a shared passion for ground-breaking design, wherever the brief takes us.



# Design that Resonates

Effective design should resonate with its intended audience – in other words, any creative works should strike a harmonious and unexpected chord to delight the audience.

Design that resonates can only be the natural conclusion of a process that starts with listening and learning – about people, behaviours and the world in which we live. That's why our driving philosophy is one of Restless Curiosity



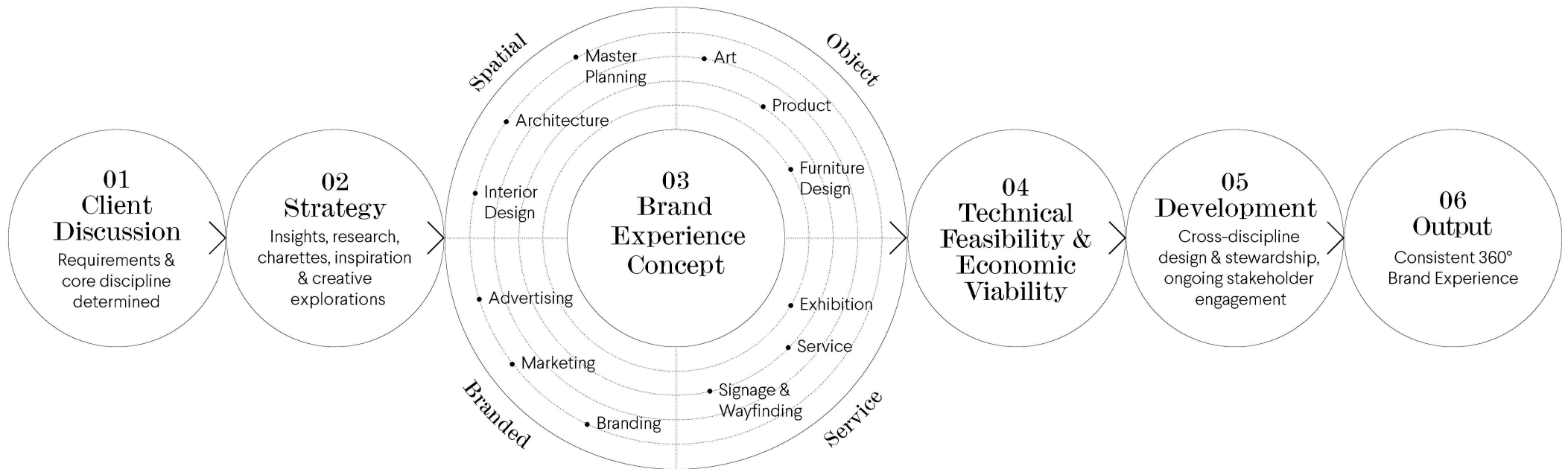
# Restless Curiosity

This insight-driven approach means we arrive at design solutions which fuse people, place and culture effortlessly, which strike an emotional chord in the audience and bring a sense of unexpected relevance and harmony.

Once a concept is crafted, then the real challenge begins: making the ideas live and breathe through flawless execution. This is the final stage in what we call the Resonance Process.



# Resonance process





# G.A Residential



Whatever the budget or scale of a project, our first step is to understand our client's goals and what makes a project distinctive.

We believe in a holistic approach to interior design, beginning with the spatial possibilities of an interior and allowing these elements to inform the interior architecture and styling alongside our Client's brief. Furniture, lighting and fabrics are all considered as part of the developing sequence, to ensure a project's unity yet allowing every space its own distinct character.

It is the completeness of our approach to design that is the G.A Residential trademark. We do not favour a 'house style' but always strive for innovative, well considered designs that will stand the test of time.

# Services and skills

## Services

- **Private Residences**  
Private Spas
- **Residential Developments**  
Common Parts  
Show Apartments  
Clubhouses  
Pools & Spas
- **Serviced Apartments**
- **Aparthotels**

## Skills

- Master Planning
- Space Planning
- Concept Design
- Design Development
- Contract Documentation
- Specification Writing
- Procurement
- Job Site Inspection
- Installation



# The library



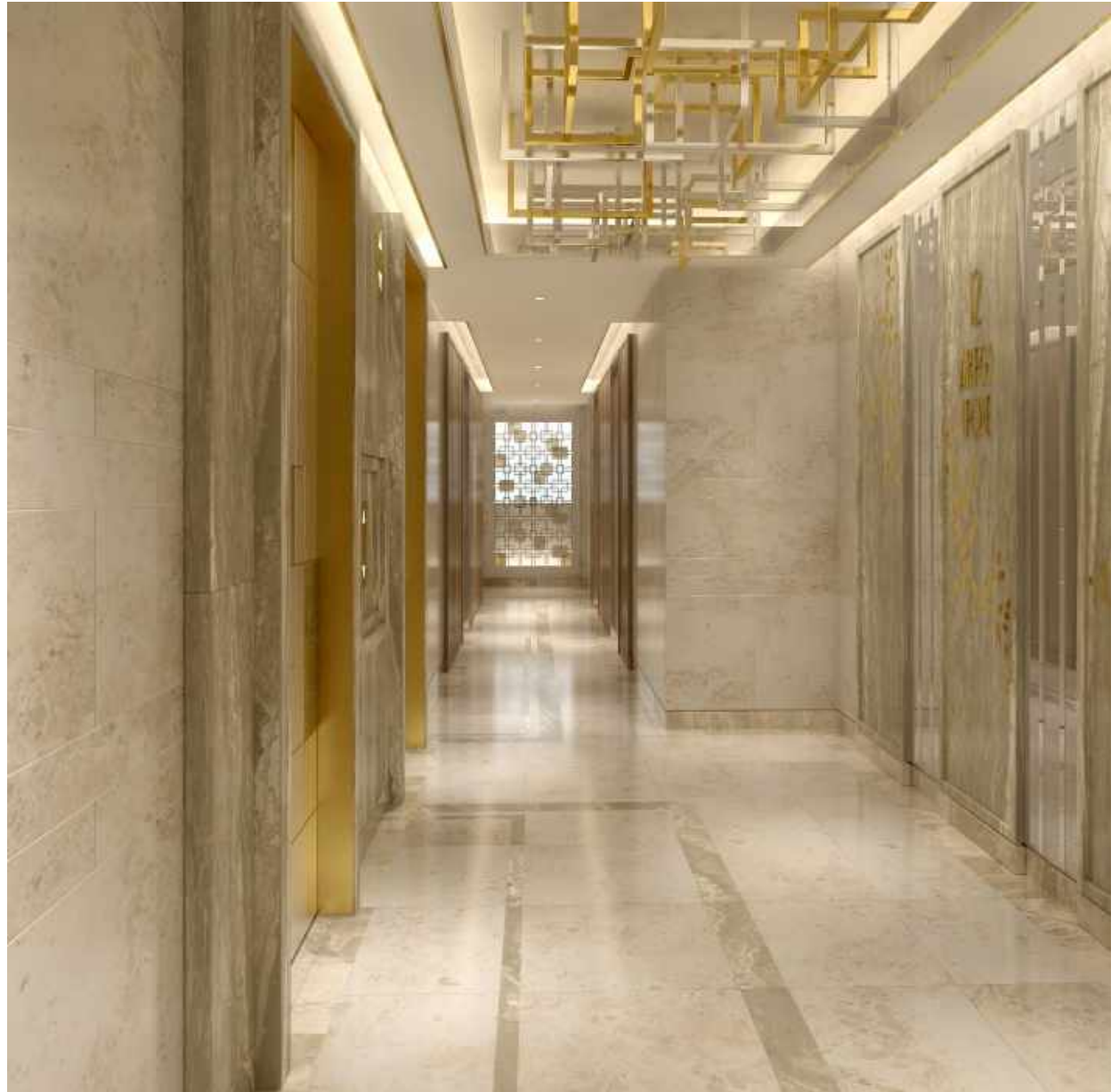
G.A Residential and G.A Design share a large and comprehensive fabric, furniture and materials library in our London office.

Our full time Librarian ensures that we are up-to-date with the latest products and designs from around the globe.

This ability to source internationally means that we are able to create the most appropriate design for each project, as well as providing competitive prices.



# Commercial projects



# Residential Clubhouse, Hong Kong

A large focus for our design narrative was the idea of bringing the outdoors inside and vice versa. We deliberately kept the lobby/reception/lounge areas open to ensure natural daylight flooded the indoor spaces. In the courtyard we used the garden architecture to further develop the 'indoor-outdoor' narrative.

Elements that subtly remind people of the outdoors were added throughout the interiors. A crystal leaves light installation acts as a central feature in the lounge; a motif which then repeats within the staircase, connecting the three levels of the Clubhouse

The design draws upon Art Deco, choosing motifs from the period but using them in a contemporary way to keep the designs current.



Residential Clubhouse



Bespoke residential design

© G.A Residential





Residential Clubhouse



Bespoke Residential Design

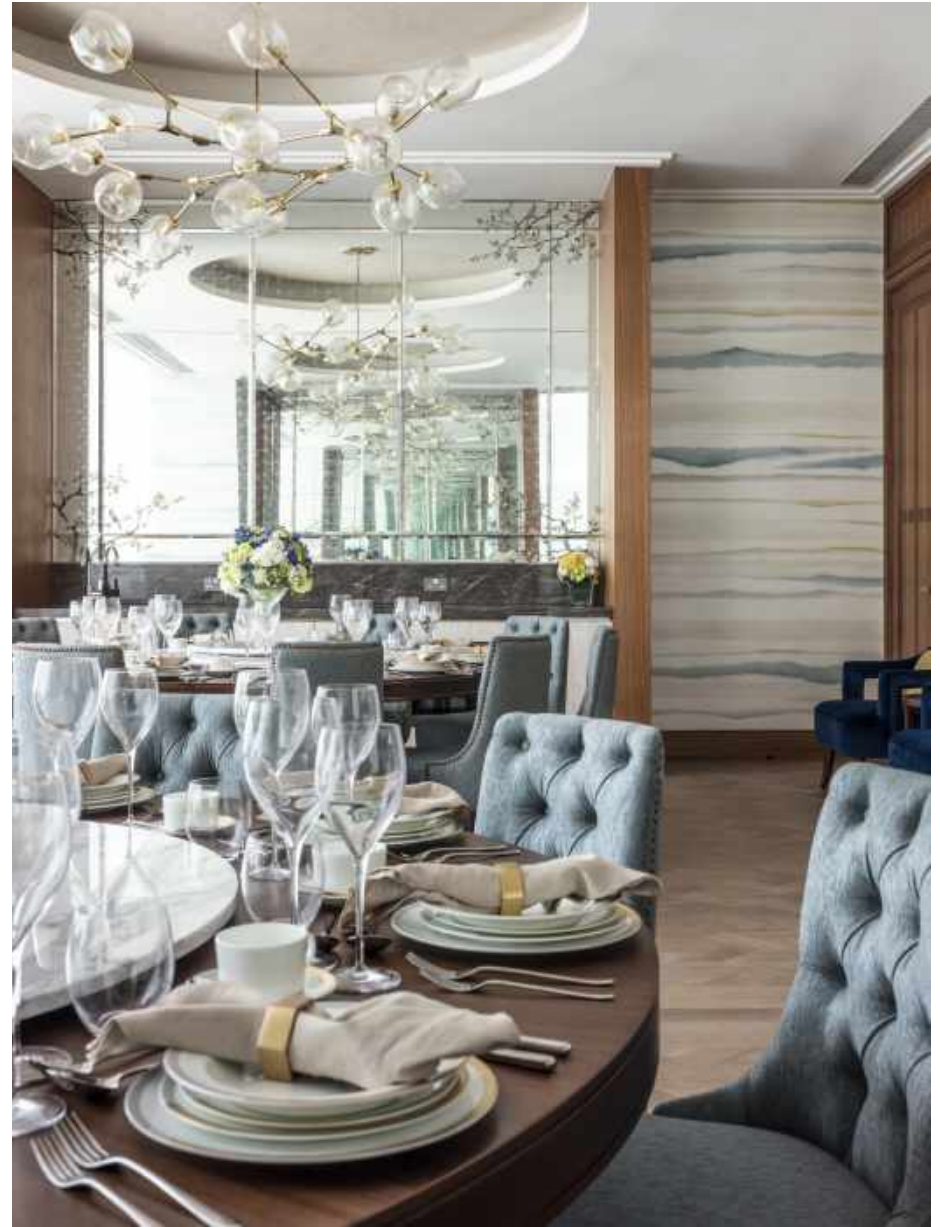
© G.A Residential







Residential Clubhouse



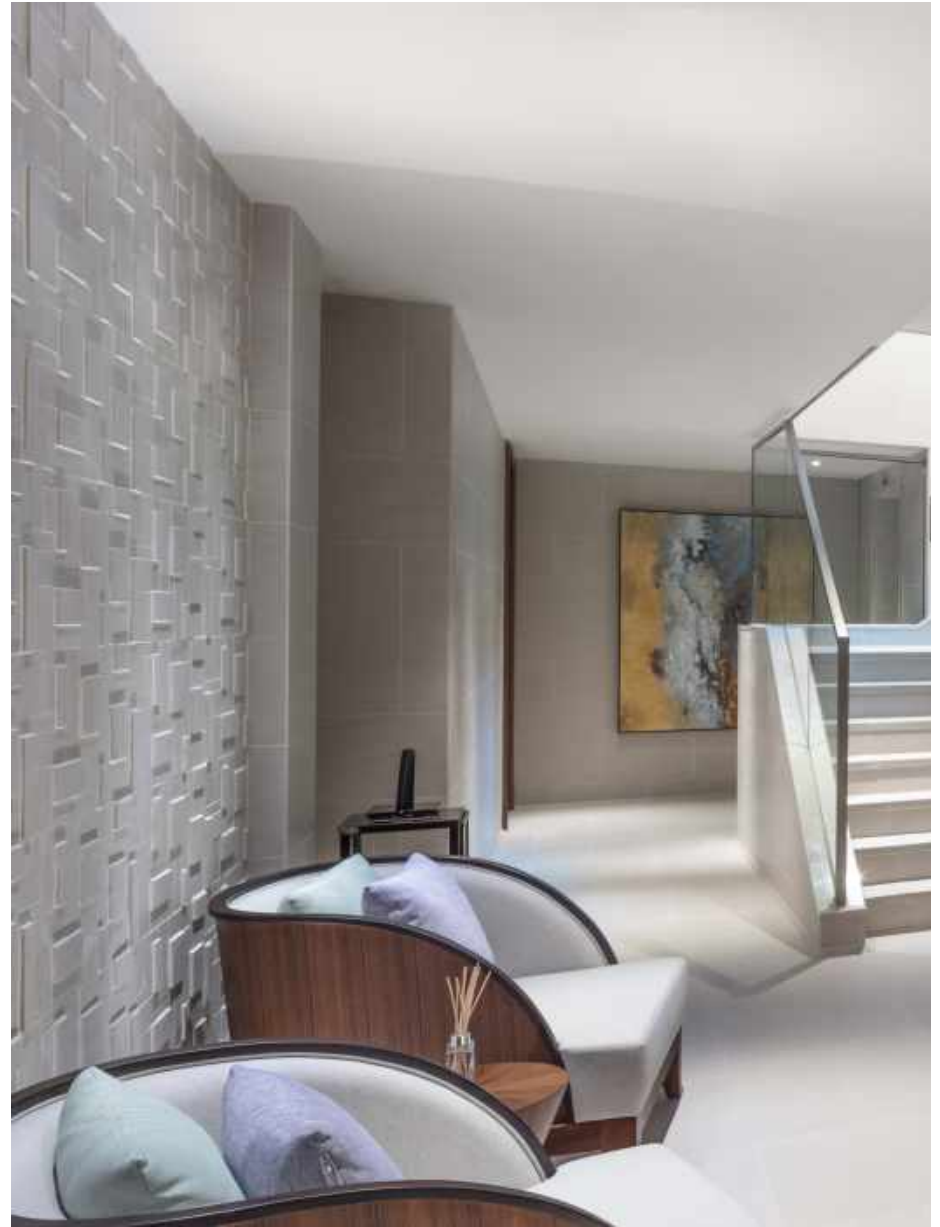
Bespoke Residential Design

© G.A Residential



Residential Clubhouse

Bespoke Residential Design



© G.A Residential



# One Park Drive, London

A high profile development by architects Herzog & de Meuron sits on the water front in London's prestigious Canary Wharf. The brief for the Public Areas was to create a sense of international elegance to match and compliment the iconic architecture.

Volume is maximized in the main Reception Lobby by using a clean neutral palette punctuated by a hand carved stone feature wall and punchy modern artwork. The more intimate areas are made comfortable using modern statement furniture with the introduction of texture and colour.

The intention of the interior design is to speak of luxury and sophistication with understated impact.



One Park Drive, London



Bespoke residential design

© G.A Residential













# Bayview show apartment

To appeal to the appropriate market, G.A Residential were tasked with bringing the classic contemporary interiors style to the hugely modern architecture of this glass-fronted development.

The challenge was to balance these two, potentially conflicting, styles. Traditional design elements were used for direction but simplified. Chevron timber floors were chosen in place of herringbone. Panelling to the walls was kept subtle and where possible, simple, geometric shapes were chosen over anything too heavily detailed.







# Corinthia Hotel, London

A luxurious hotel in the style of a grand English home with contemporary amenities and state of the art facilities. The Lobby Lounge at the heart of the hotel features oak timbers, sumptuous carpets and luxury residential-style furniture. The space is swathed in natural light emanating from the magnificent 7-metre glass dome, which boasts a unique, LED-lit "Full Moon" chandelier by Baccarat. French limestone flooring and dramatic Calacatta marble are used throughout, and the walls in both the public areas and guestrooms display an unrivalled collection of contemporary art. All guestrooms continue the feel of classic English elegance with oak timber borders and sumptuous leather and silk furnishings of the highest quality. Individually designed penthouse suites are the largest in the Capital.



Corinthia Hotel London



Bespoke residential design

© G.A Residential

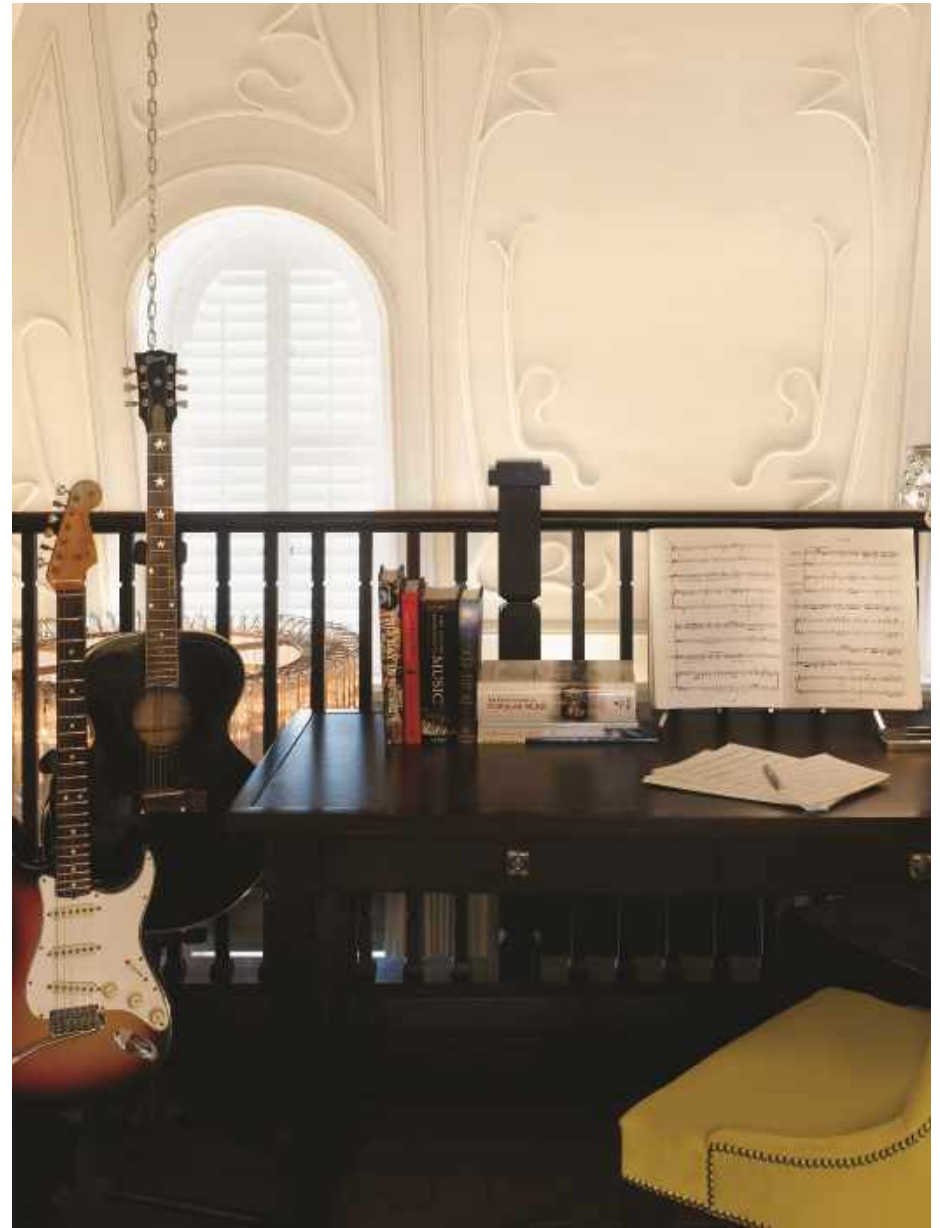






Corinthia Hotel London

Bespoke residential design



© G.A Residential







Corinthia Hotel London

Bespoke residential design



© G.A Residential









# Private projects



# London penthouse

This striking property is set within the eaves of an historical building in the heart of London. The brief was to strip out the building and reconfigure all areas to accommodate for social gatherings and a growing family's needs.

Inspiration was found in the period details of the building to create a modern and sophisticated penthouse design which still embraces the essence of the original building.

The material palette plays on the natural textures of wood and Italian stone. Fine fluted detailing in different materials recurs throughout the house, a contemporary touch that incorporates a sense of continuity to the design.











London penthouse



Bespoke residential design







London penthouse

Bespoke residential design



© G.A Residential

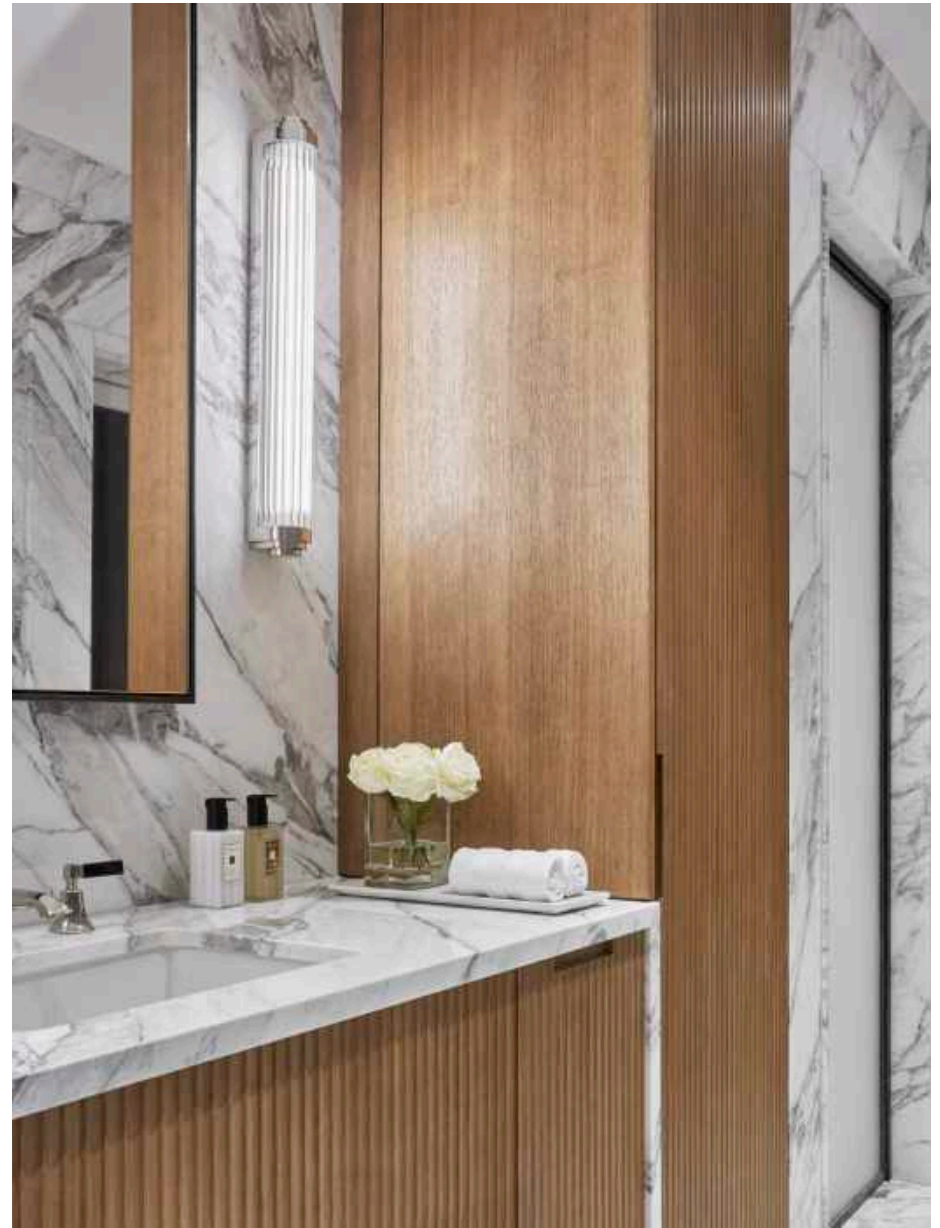






London penthouse

Bespoke residential design



© G.A Residential





# Luxury extension, Mayfair, London

This heritage property is one of the last remaining townhouses on the street, while the exterior remains intact, its interior has undergone significant transformation.

An entirely new sub-basement floor has been added comprising a 15-metre pool, fully equipped gym and luxury spa facilities. The pool area is designed as a space of tranquillity, with subtle contrasts of texture and light that add grandeur.

The renovated space now has a new state of the art, 10-seater cinema room, as well as a modern kitchen and dining room.

A gallery space with a large skylight floods the area with natural light, avoiding the usual pitfalls of basement properties.



















Luxury extension, Mayfair, London

Bespoke Residential Design



© G.A Residential





# London Pied-à-terre

This stylish property, in one of London's most desirable locations, is the definition of liveable luxury. The brief was to modernise and refresh; with an emphasis on maximizing both space and natural light.

The house previously had three bedrooms on the upper floor, two of which were transformed into a stunning Master Bedroom suite, complete with a dressing room and a luxuriously spacious bathroom. To ensure the house remained a three-bedroom property, an unused downstairs dining room became a beautiful bedroom.

The staircase was completely redesigned, unnecessary corridors were eliminated and doors heights were increased to emphasise the volume of rooms, all adding to the sleek opulence of this property. Attention to detail can be seen throughout the house, ensuring seamless continuity.









London Pied-à-terre



Bespoke residential design

© G.A Residential



London Pied-à-terre

Bespoke residential design



© G.A Residential







London Pied-à-terre



Bespoke residential design

© G.A Residential







London Pied-à-terre

Bespoke residential design



© G.A Residential





# Duplex penthouse Mayfair, London

This modern, state of the art, 9th floor penthouse looks down onto Mayfair's prestigious Park Lane with views over the trees of Hyde Park. The apartment was transformed into an elegant, luxurious residence. A subtle colour palette with rich textures link the living spaces while generous storage was achieved by minute attention to detail in all the areas.

Finishes included wide-grained oak joinery with matching leather inserts, engraved glass panels and *Smart Glass* entrance doors. Opulence and luxury abound, from bespoke *Murano* crystal lighting, handmade silk carpets, cashmere upholstery and marble slabs in the bathrooms handpicked from the quarries in Italy.





















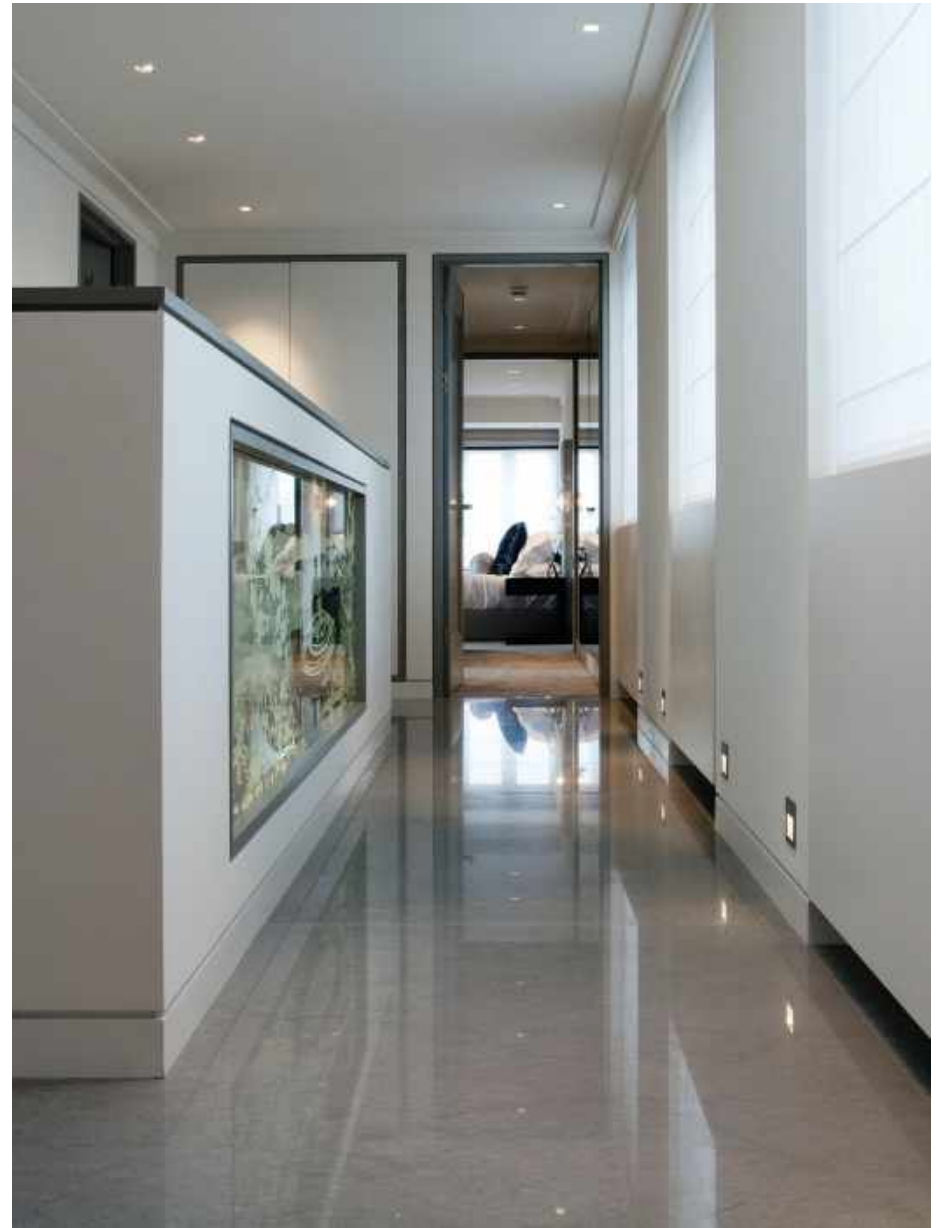






Duplex Penthouse Mayfair London

Bespoke residential design



© G.A Residential



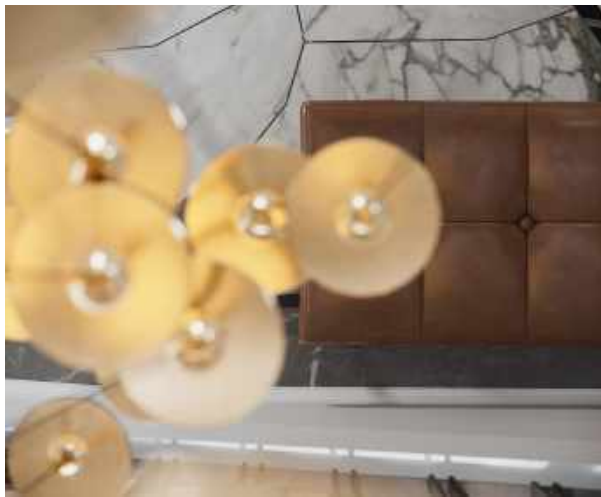


# Brooklyn townhouse

This stylish 5-bedroom townhouse in Brooklyn NYC, spans 4 floors, the upper floors connected by a sweeping sculptural staircase.

Our clients were international travellers, keen to imprint their own preference of style and fun into their family home. The trick was to incorporate a mix of bold statements but still retain a sense of coordinated sophistication.

We did this by connecting spaces through the project's architectural framework, such as bespoke doors, repetition of materials and refined elegant details, thus allowing pattern and texture to take the centre stage. The end result is eclectic yet supremely liveable.





















# Bucharest residence

This historical home lies in the leafy suburbs of a European capital. The building tells many tales from the past however the new owners wanted to lift its interiors into modern times. Our task was to celebrate its original features and create rooms that are bright, fresh and welcoming, for all generations.



Bucharest residence



Historical Residence







Bucharest residence

Historical Residence

© G.A Residential



Bucharest residence

Historical Residence

© G.A Residential









# Central London apartment

The client wanted an apartment where they could entertain guests and maximise their own living space. They sought a design which embraced a bold sense of colour, yet with details and finishes kept simple and clean. Plenty of space, to showcase their collections and artwork which they had built up over the years, was also mandatory.

Space was maximised by removing existing walls and re-planning the rooms so that all the main living areas benefited from natural light and London rooftop views. Styling was tailored, drawing from Art Deco elements of the existing architecture, to which layers of toned down texture were added: lacquer, matt plaster, antiqued mirror and ribbed bronze panels, to create features and emphasize space.



Central London apartment



Bespoke residential design













Central London apartment

Bespoke residential design



© G.A Residential

# Mayfair apartment, London

This smart, light and airy two bedroom apartment maximizes space. The open plan living/dining room adjoins the kitchen with sliding doors forming dividers between the two spaces. Smoked and limed oak timber floors connect the rooms while the dramatic entrance hall includes inset marble slabs for added luxury. Bespoke joinery and furnishings provide valuable storage at every given opportunity.

Finishes to joinery pieces include shagreen and specialist *Kinon* lacquer panels to wardrobe fronts, horse hair wallpaper completes the entrance hall while silk and velvet panels provide additional luxury to the master bedroom and compliment its bespoke lacquer furniture.











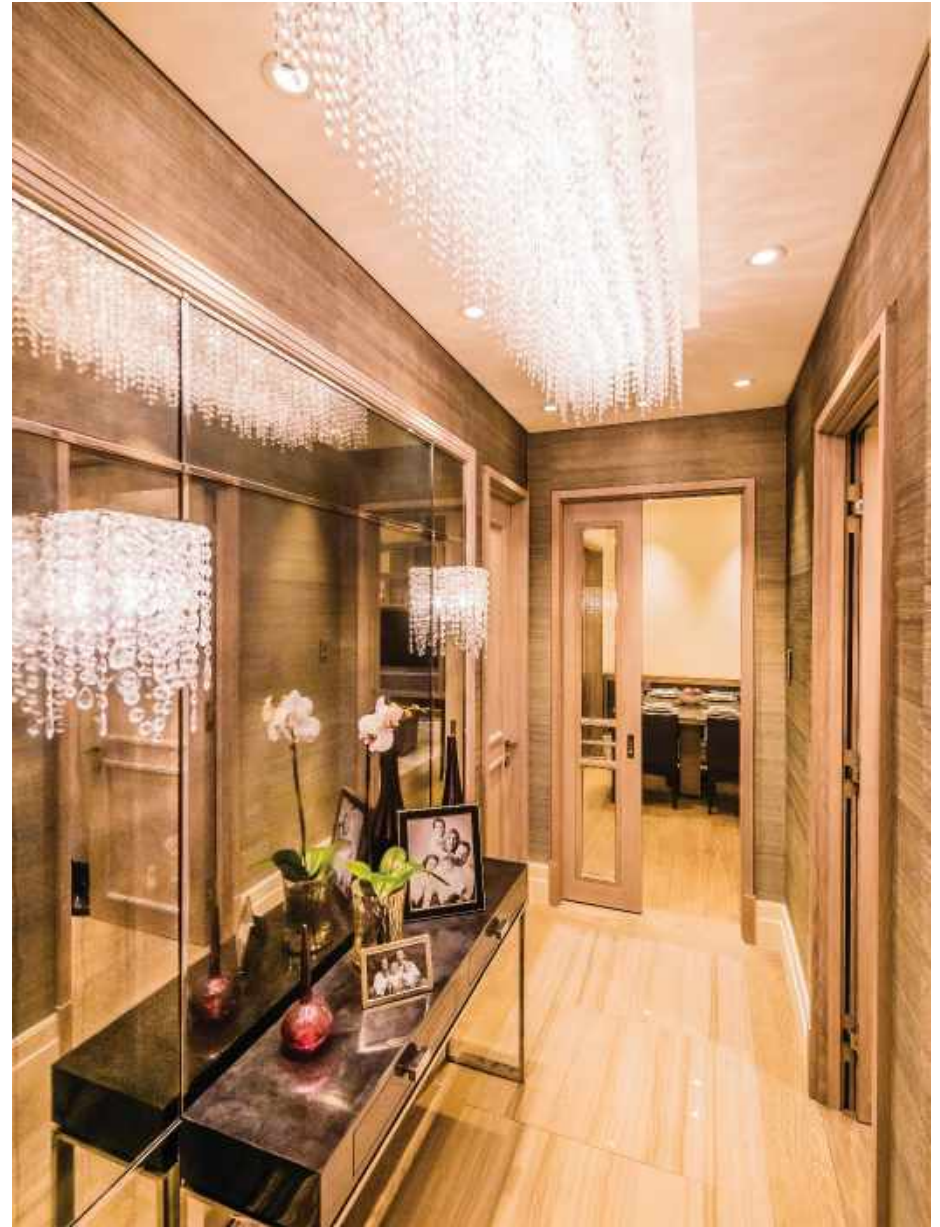








Residential Mayfair London



Bespoke residential design

© G.A Residential

# Completed

**Corinthia London**  
London, UK  
— Client: CHI Ltd

**Duplex Penthouse**  
Fountain House  
Mayfair, London  
— Client: Luxlo Property

**Grade 2 Listed Residence**  
Mayfair, London  
— Client: Private

**Presidential Residence**  
Azerbaijan  
Advanced Concept  
— Client: Private

**Marketing Suite**  
London, UK  
Advanced Concept  
— Client: St George Plc

**Residential Development Clubhouse**  
Taipei, Taiwan  
Interior Design  
Documentation  
— Client: Sunty Development

**Hereford House Apartment**  
Mayfair, London  
— Client: Luxlo Property

**Mayfair Apartment**  
Grosvenor Square, London  
— Client: Private

**Bayview Show Apartment**  
Guangzhou, China  
— Client: Kingold Group

**Private Apartment**  
Central London, UK  
— Client: Private

**Residential Development Typical Apts and Public Spaces**  
Hong Kong  
— Client: Wheelock

**Residential Development Clubhouse**  
Hong Kong  
— Client: Wheelock

**Show Apartment**  
Mayfair, London, UK  
— Client: Luxlo Property

**Private Residence Sub Basement Pool & Recreation Areas**  
Mayfair, London, UK  
— Client: Private

**Private Apartment**  
Central London, UK  
— Client: Private

**Private Town House**  
Brooklyn, NYC, USA  
Interior Design Documentation  
— Client: Private

**Residential Towers & Clubhouse**  
Mumbai, India  
Design Development  
— Client: DB Crown

**Residential Development Apartments & Public Areas**  
London, UK  
Design Development  
— Client: St George, Berkley Homes

**Hilton Residential Hotel**  
Zamalek, Cairo, Egypt  
Design Development  
— Client: Space Consultants

**Private Apartment**  
Mayfair, London, UK  
— Client: Private

**Private Residence**  
Bucharest, Romania  
— Client: Private

**Private Apartment**  
Belgravia, London, UK  
— Client: Private

# Ongoing Works



**Residential Development Clubhouse**  
Taipei, Taiwan  
— Interior Design  
Completion: 2021

**Residential Development Clubhouse**  
Taipei, Taiwan  
— Interior Design  
Completion: 2021

**Residential Development Marketing Suite / Clubhouse & Penthouse**  
Wuhan, China  
— Interior Design  
Completion: 2021

**Serviced & Branded Apartments**  
New Cairo, Egypt  
— Interior Design  
Completion: 2020

**Residential Development Clubhouse Kai Tak I**  
Hong Kong  
— Interior Design  
Completion 2022

**Residential Development Clubhouse Kai Tak II**  
Hong Kong  
— Interior Design  
Completion 2022

**Luxury Villa**  
Lamma Island, Hong Kong  
— Interior Design  
Completion 2022

**Private Apartment**  
Geneva, Switzerland  
— Interior Design  
Completion 2021

Unfortunately we are unable to give out information regarding the cost and/or budget of projects due to confidentiality agreements.

**G.A Design International Limited**  
Interior Architectural Design



# London

Lymehouse Studios,  
2nd Floor, 30-31 Lym Street,  
London, NW1 0EE, United Kingdom  
T +44 (0)20 7482 0054  
F +44 (0)20 7482 0064  
E london@thega-group.com



# Budapest

Muzeum Korut 7 1/7  
Budapest 1053, Hungary  
T +36 (1) 266 9766  
F +36 (1) 267 0946  
E budapestoffice@thega-group.com

# Kuala Lumpur

#1-02 One KL, No. 6 Jalan Pinang  
50450 Kuala Lumpur, Malaysia  
T +60 (3) 2300 3441  
F +60 (3) 2300 3442  
E kl@thega-group.com

# Shanghai

Floor 5, No. 687 Dong Da Ming Road  
Shanghai 200080, P.R. China  
T +86 21 6071 3818  
F +86 21 6072 3817  
E shanghai@thega-group.com