



Interior and architectural design portfolio

2021

Our locations



- G.A. offices
- Project locations

Company background

The G.A Group are a collection of design companies, who have been creating award-winning experiences for over 30 years.

United by a shared passion for ground-breaking design, wherever the brief takes us, our driving philosophy is one of Restless Curiosity.

All our projects are vastly diverse in terms of budget and style and we are recognised worldwide for the quality of our work and our ability to respond to different environments incorporating local architecture and cultural references into our concepts.

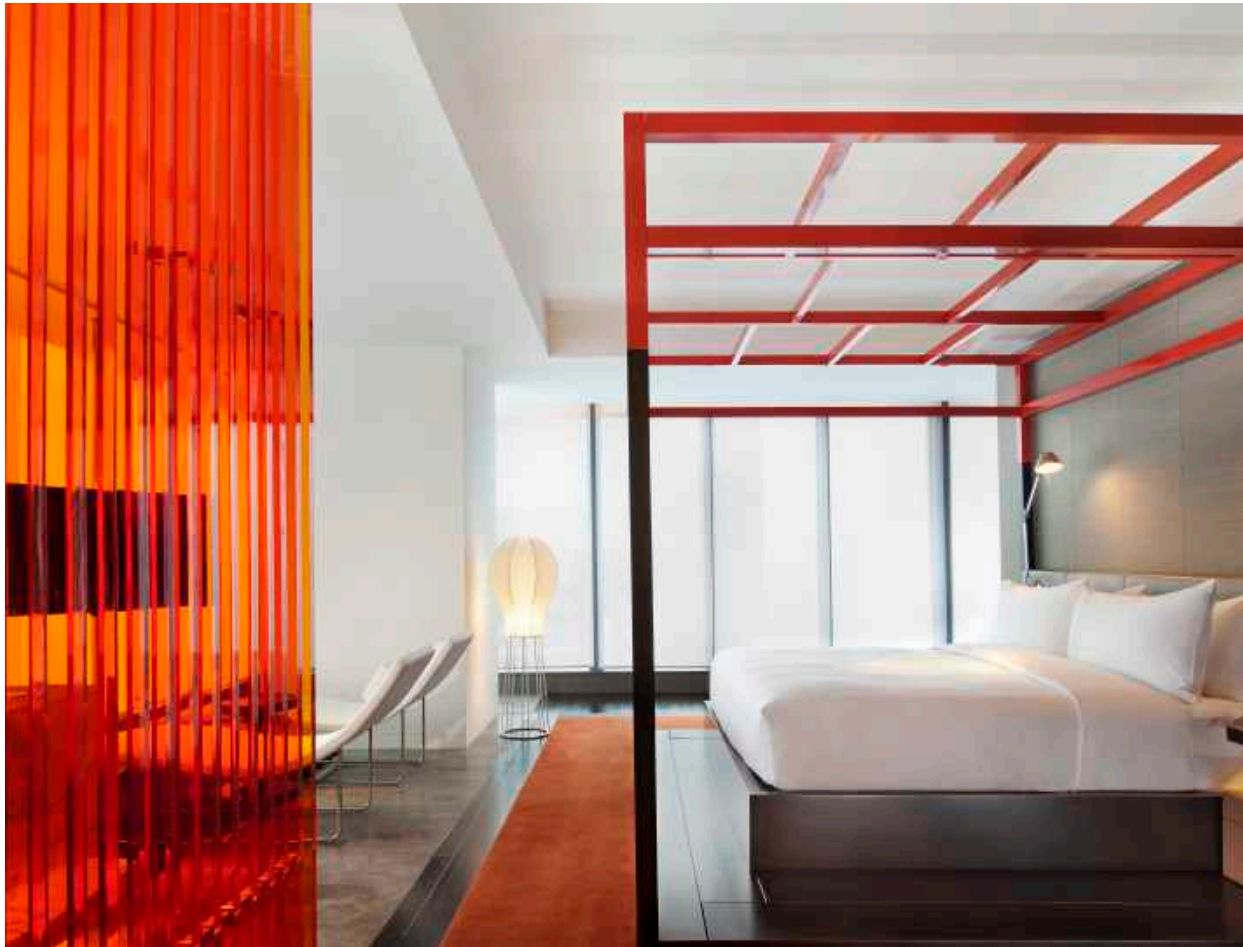
Our global team comprises a committed, 160-strong group of world-class designers, architects, strategists, project managers and creatives, who work out of our London, Kuala Lumpur, Budapest and Shanghai offices.

Above all, it is our lateral thinking, ability and years of hospitality design experience that makes G.A a leader in the Hotel Design Industry.



Palace Hotel Tokyo

Our philosophy



Effective design should resonate with its intended audiences.

Design that resonates can only be the natural conclusion of a process that starts with listening and learning.

About people, behaviours and the world in which we live.

W Taipei

Specialist design services

We provide the full design service from space planning, concept design through to documentation, construction and installation.

Services

- Concept Architecture and Master Planning
- Programme Development
- Space Planning
- Schematic Design
- Design Development
- Contract Documentation Production
- Specifications
- Job Site Inspection
- Installation

Specialisation

- Hotels
- Resorts
- Golf Clubs
- Restaurants
- Casinos
- Service Apartments
- Private Residences



Ritz Carlton Budapest

The library



The G.A Group specifies over £90m of fixtures, fittings and equipment worldwide, each year. This makes us a significant global hospitality specifier, with our in-house libraries housing an encyclopaedic canvas of potential partners, products, designs, fabrics and stone.

Such depth of expertise means we have the technical insight, connections and detailed eye to take concepts through into reality flawlessly – using craftsmen and leading-edge technology to ensure that design intent is captured perfectly in our project work.

Langham Hong Kong

The management

G.A's Directors are leaders in their field, their visionary approach and attention to detail continues to produce remarkable work.

Their shared philosophy and approach to design allows them to foster a community of creativity, producing award-winning projects, time and time again.

Jonathan Aeberhard – Chief Executive Officer
Terry McGinnity – Executive Design Director
Edward Davies – Managing Director of G.A Design London
Juliet Eardley – Managing Director of G.A Residential London
Kate Cox – Managing Director of G.A Brand Design
Duncan Mackenzie – Managing Director of G.A Destination Architecture

Corinna Galdies – Director
David Clixby – Director
Pippa Ayres – Senior Associate
Sam Hall – Associate - Global Head of FF&E
Carl Longman – Associate
Simon Abela – Associate
Wing Tam – Associate
Cara Satmoko – Associate

Our office in Budapest is managed by:
Paul Woods – Managing Director

Our office in Kuala Lumpur is managed by:
Adrian Currie – Managing Director

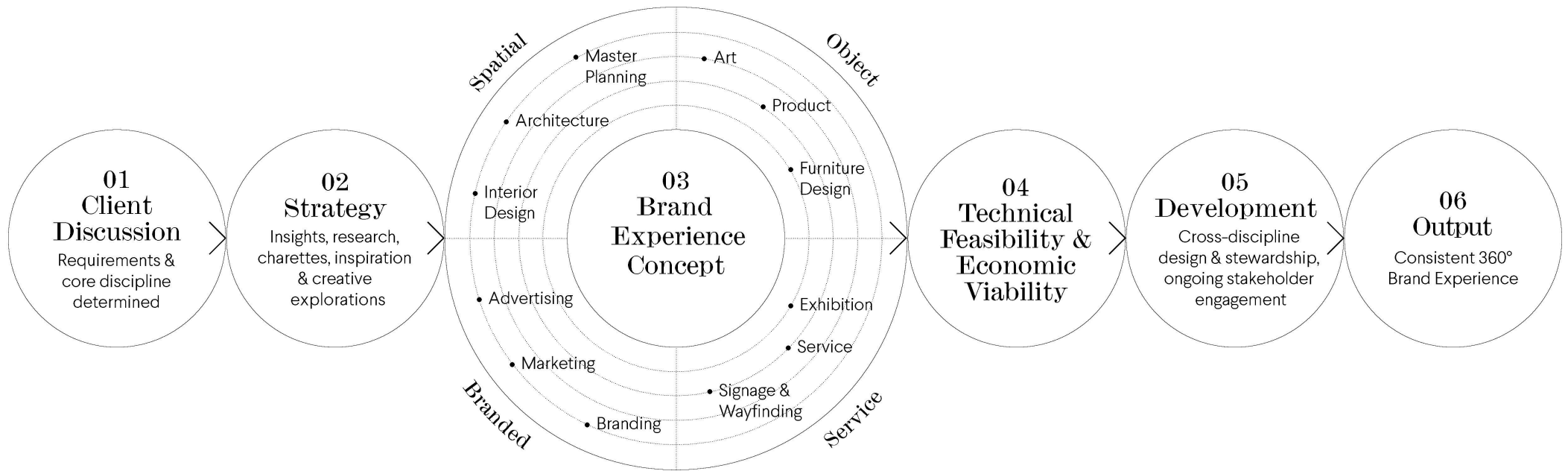
Our office in Shanghai is managed by:
Jonathan Wang – Managing Director

Our office in New York is managed by:
Johnathan Garrison – Managing Director



St Regis Osaka

Resonance process





Urban hotels

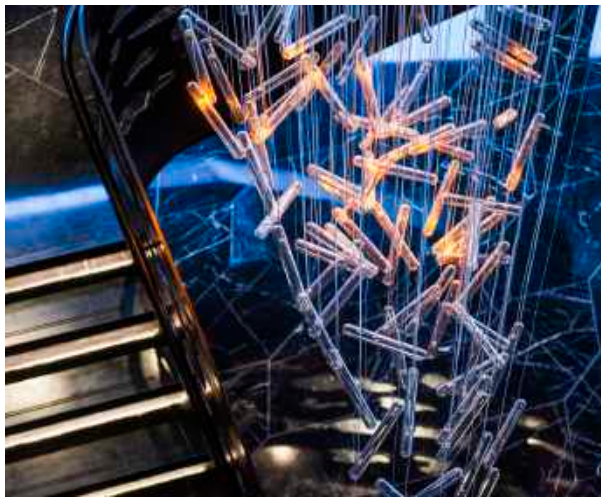


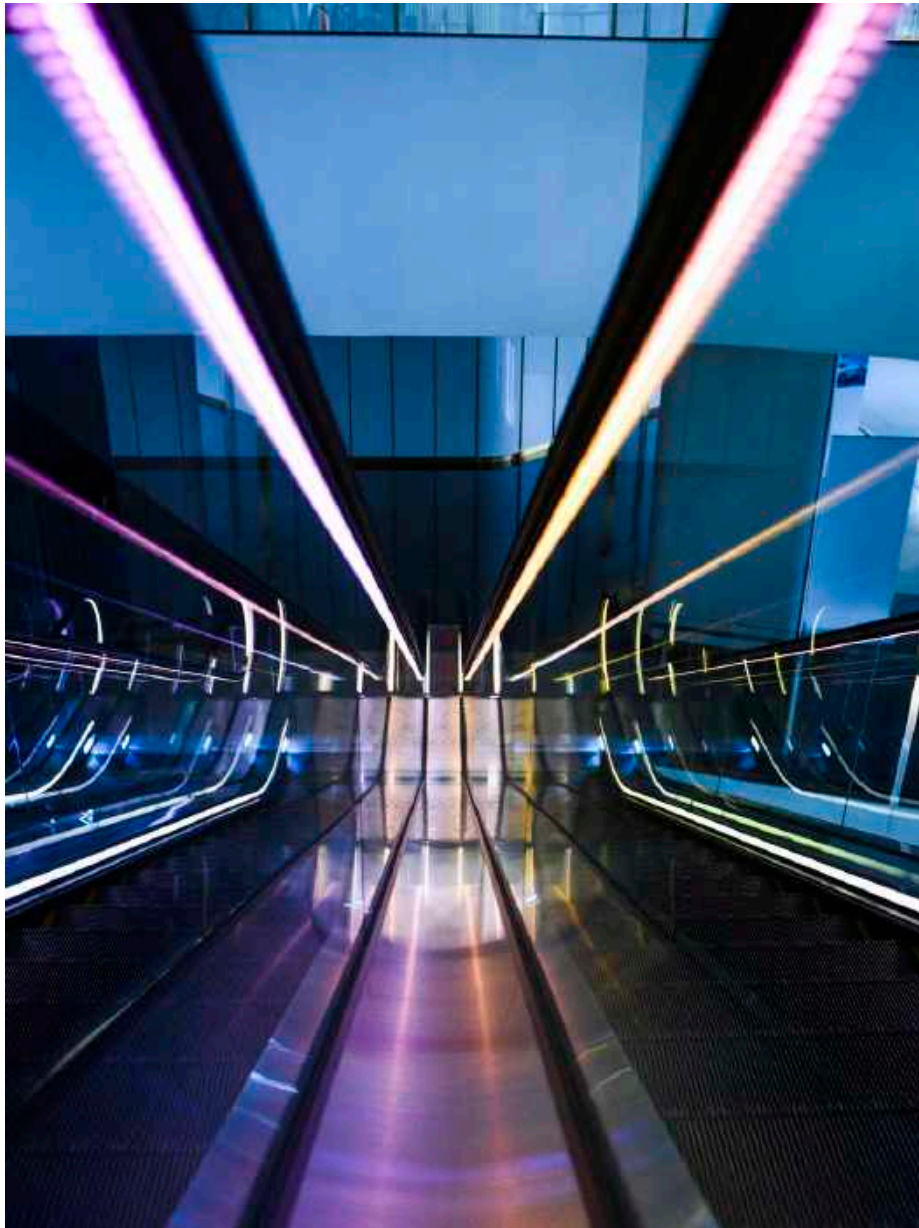
W Shanghai

W Shanghai is located on a site where the rich juxtaposition of clashing cultures occurs; the futuristic electrified neon of the Lujiazui peninsula provides the backdrop whilst the traditional international buildings of the Bund line the west bank of the Huangpu reflecting on the past.

G.A were involved in the design from the project inception and have created a contemporary design, which draws upon diverse elements of this energetic metropolis.

The design reflects Shanghai as a truly diverse 'melting pot' full of contrasts, physically and socially, but always with an underlying element of decadence and glamour.





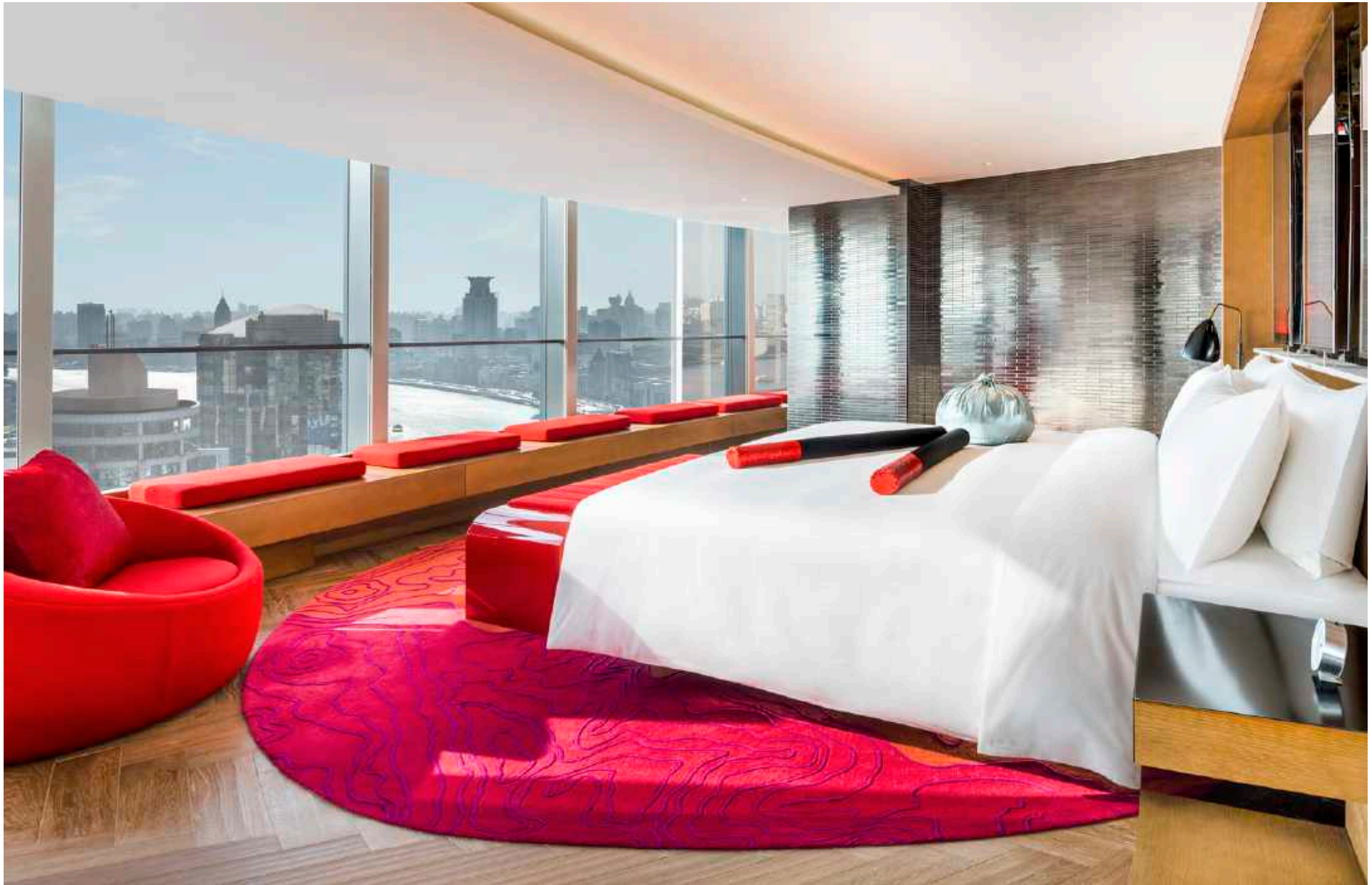
W Shanghai



Urban Hotels

© G.A







Belmond Cadogan London

Once the favoured haunt of actress and socialite Lillie Langtry and Oscar Wilde, who was infamously arrested in room 118, the site has had a rich and illustrious past ever since it was built in 1887.

Having undergone a complete transformation to restore the unique heritage of the site, the interiors have now been renovated in a style that is at once contemporary and reflective of the hotel's history, with surprising details alluding to the people who shaped its past.

G.A completed the interiors for the public areas and all guestrooms and suites. The aim was to evoke the spirit of a grand townhouse. One that reflects on its' architectural history through research, restoration and reinterpretation with the 'bones' of the building being brought back to its original spirit.











Amari Yangshou Hotel

Taking up prime position in the bustling city of Yangshuo, the Amari hotel is a vibrant mix of contemporary design and traditional details.

Beyond the city gigantic karst peaks, lush and green, can be seen from the modern guestrooms where clean lines are accentuated by subtle details and artworks that reference the historical roots of the area. Pops of colour provide energy to an otherwise muted and tranquil palette.



Amari Yangshuo Hotel



Urban Hotels



Waldorf Astoria Amsterdam

Once inside the Herengracht canal houses of the Waldorf Astoria Amsterdam guests are transported into a world of discreet luxury, a relaxed haven in the middle of an exciting city.

The interiors of the buildings reflect Dutch refined elegance and the design approach was to create a classic contemporary interior with strong reference to locality and maritime history.

The wonderful Dutch painters and paintings of the past were referenced and some of the colour palettes of actual paintings were used to form the basis of our schemes.



Waldorf Astoria Amsterdam



Urban Hotels







W Taipei

A luxurious 400 guestroom new build 'W' Hotel located in downtown Taipei.

Conceived as an 'Urban Oasis' the hotel begins at the 10th floor with a spectacular landscaped garden arrival level, featuring pools and pavilions. The loft style rooms are open plan with sliding panel walls, generous wet rooms and meditation platforms.

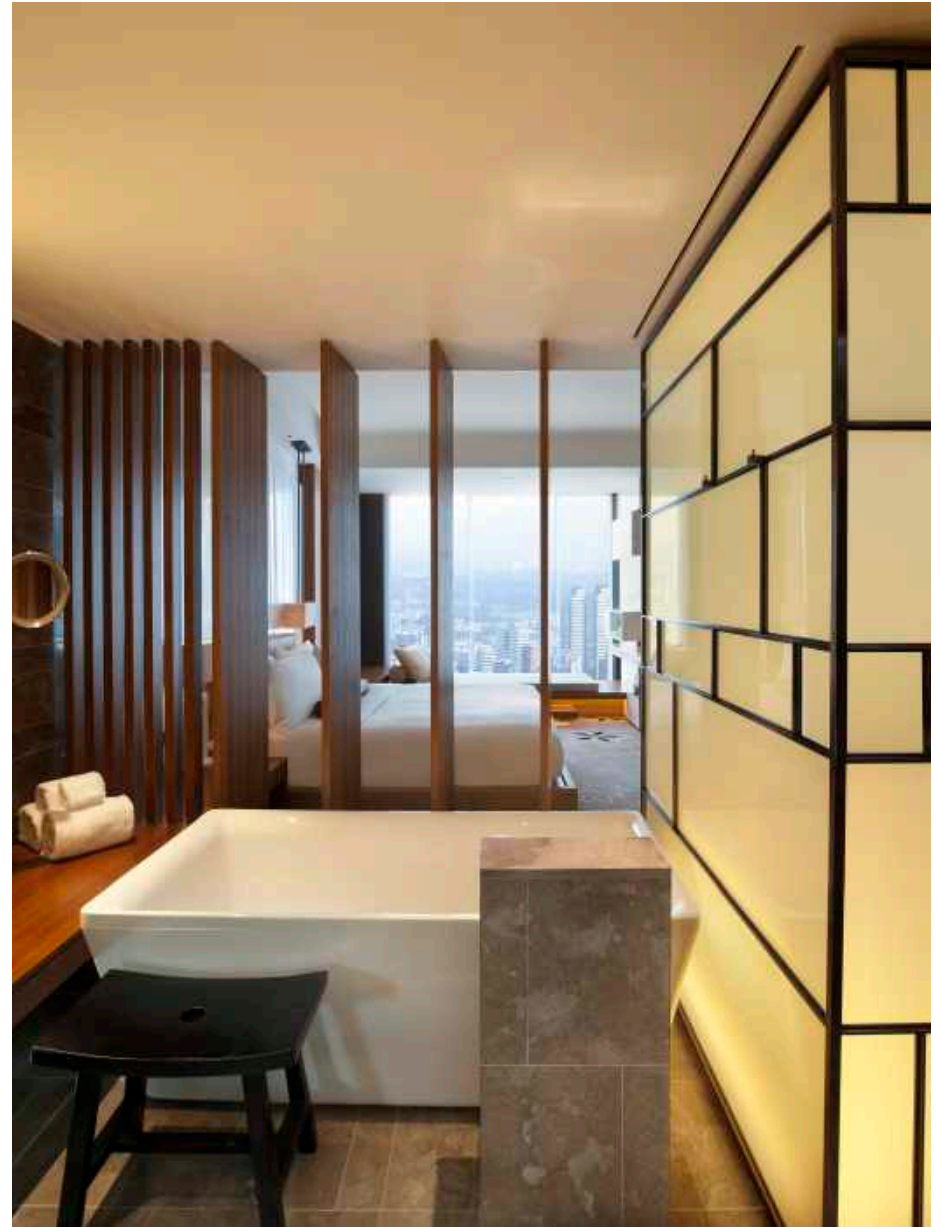
The dining experiences include the 'Jasmine' inspired 'Kitchen Table' and the deep plum tones of the Asian restaurant.





W Taipei

Urban Hotels



© G.A





The Rosebery Mandarin Oriental

Conceived as an elegantly relaxed morning room, the renovation of The Rosebery is a “reimagining” of the original Tea rooms from the hotel's heyday in the 1920's. Our design breathes life, light and joy back into the original, full of bright pops of colour and playful details.

Subtle use of antiqued mirror gently reflects light throughout the rooms and cleverly transforms the bay windows, opening up a wonderful vista to Knightsbridge.



The Rosebery, Mandarin Oriental Hyde Park



Urban Hotels



Langham Sydney

A renovation of a boutique hotel in an up-and-coming residential district of Sydney. Our aim was to communicate the story of the hotels' grand history whilst simultaneously reinvigorating the spaces with contemporary design elements combined with sophisticated and classic references.

In order to give the hotel a high-end residential feel, we introduced rich, elegant materials and features aiming to produce unique yet timeless spaces for the guests to enjoy.

One of the key features at the hotel is the significant collection of artworks by renowned Australian artists which can be seen throughout the Public Areas, including in the signature Langham Palm Court.











Palace Hotel Tokyo

Situated opposite the Otemon gate of the Imperial Palace and its gardens, the Palace Tokyo is a grand destination hotel that celebrates its unique position and views.

Vast picture windows open up the space and provide a wonderful sense of light and an immediate connection to the gardens outside. The colours are fresh and relaxing, and echo the greens of the landscaping.

In keeping with the theme of the hotel, the landscaping is beautifully balanced and offers views of the Imperial Palace Gardens.



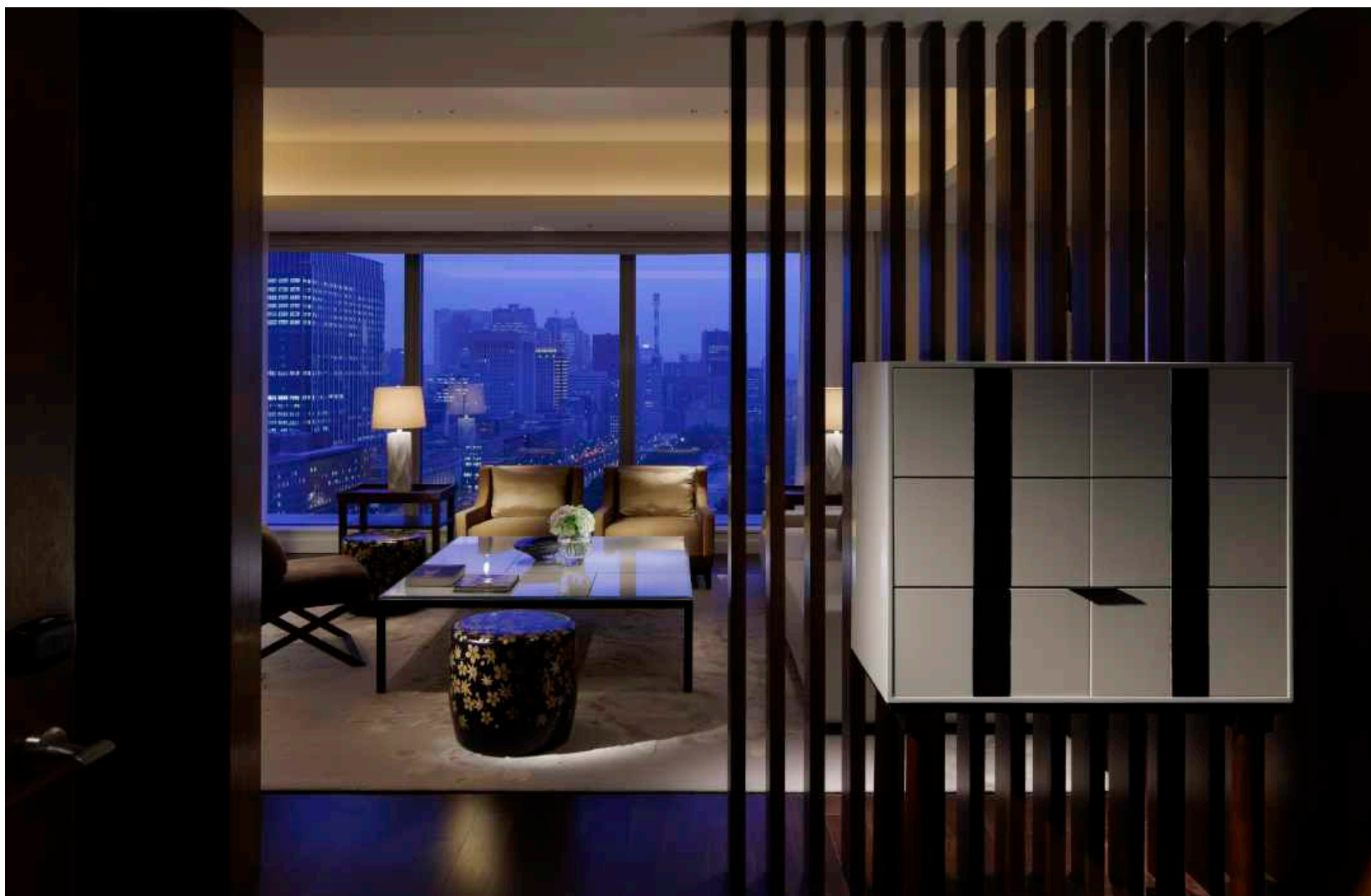
Palace Hotel Tokyo



Urban Hotels







Corinthia London

The complete renovation and re-invention of a grand hotel in the heart of London.

Occupied as office space for the past 70 years, the design brings back all the glory of the previous hotel combined with the expectations of current times to promote a truly new 'Grand' hotel for London.

Rich limestone, fumed oak and leather combine with restored classical detailing to produce a refined and unique experience.



Corinthia London



Urban Hotels

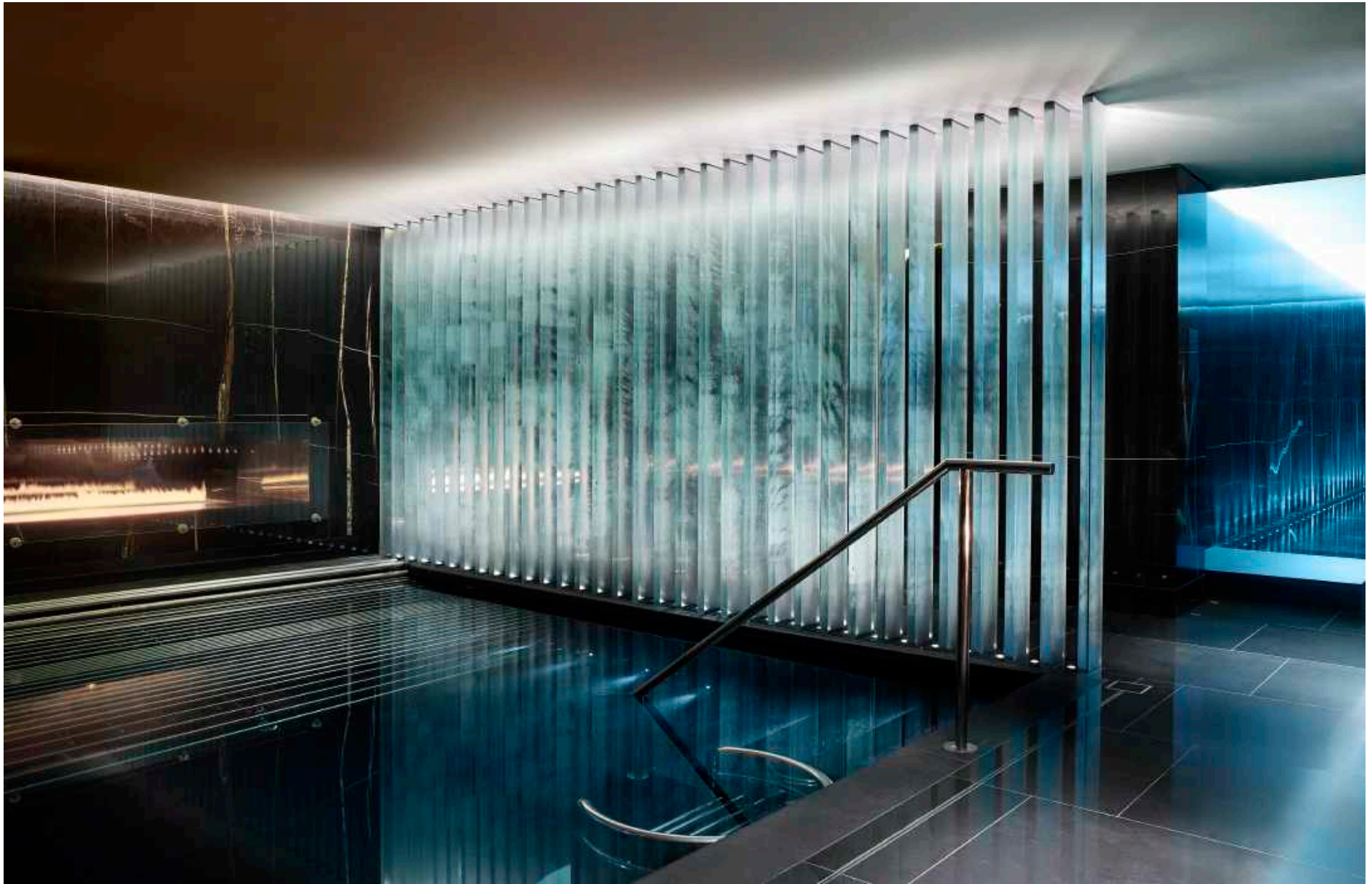
© G.A













JW Marriott Hotel Nara

The brief was to provide interior design for a luxury new-build hotel, in a contemporary but timeless style, which subliminally immerses the guest in the wonders of the area and is unique to the setting and culture of Nara.

The reception and lobby design is purposely not overly formal but instead more relaxed, and welcoming, rather like that of a Grand Residence. Timber beams in the lobby space mirror those used in the distinctive Temples and ancient houses of Nara.

Traditional influences reimagined in a contemporary style can be seen throughout the entirety of the hotel, but most prominently in the Guestrooms. The Guestroom scheme has a base colour of natural, fresh tones with the use of timber, bronze and leather – all materials found within the traditional houses of Nara.











Conrad Tokyo

This new build exclusive flagship hotel for Conrad Hotels is located in the Tokyo Shiodome area, with panoramic views over the Hamarikyu Gardens and the Tokyo Bay skyline.

The contemporary interior is a reflection of the building's environment, using strong forms and rich materials. The sky lounge has an island bar, offering a relaxed interaction between guests while the Gordon Ramsey signature restaurant offers a smart but relaxed dining experience. The 37 floors have luxury guestrooms offering floor to ceiling views from bedroom and bathroom with large scale luxury furniture and bespoke carpets.



Conrad Tokyo



Urban Hotels



China Blue Restaurant, Conrad Tokyo



Urban Hotels





The St. Regis Osaka

Positioned on a prominent corner of the Midosuji, a 'gingko' tree-lined boulevard in Osaka, this new build hotel is located in the upper levels of a new high rise tower.

The 12th floor reception has views to a traditional outdoor Japanese garden terrace overlooking the city. The guestroom schemes expand upon the garden theme and feature flower and plant influences in the luxurious fabrics. The interior architecture is influenced by Japanese Design subtly mixed with a Western approach. All artwork has been sourced locally and features exciting new Japanese artists.



The St. Regis Osaka



Urban Hotels

© G.A









Resorts and spas



One&Only Le Saint Géran, Mauritius

Nestled into a secluded Mauritian peninsula, the idyllic One&Only Le Saint Géran's new design celebrates its easy relationship with the elements, maintaining all the openness of the original resort whilst bringing an elevated sense of modern luxury. The resort connects with the beach and its environment in a very immediate and accessible way.

The grand arrival doors announce the entry to the resort and the long open gallery; a wonderful breezeway that houses both reception and a clear unobstructed view directly to the beach. Grand lanterns guide you through the gallery past generous sofas and a floating pavilion that extends over the intimate inner water way. Soft, silver travertine to the floor echoes the ripples of beach sand, while the white washed interior gently reflects the light.











One&Only Le Saint G ran, Mauritius

Resorts & spas



  G.A

Westin Tashee

Nestled in the forested hills of Taoyuan county, The Westin Tashee resort is designed to be a celebration of space and light. The wide elegant volumes are finished in simple palettes of luxurious limestone and timbers that soothe and relax, allowing the guest to connect with the exterior environment. From the gentle water at the entry to the expansive views through the lobby, the design engages with nature.

Lofted ceilings give a relaxed feeling of space while simple floating screens provide separation and detail. The vertical timber fins used throughout are a gentle echo of bamboo groves and provide a rhythmic background to the interior.









Park Hyatt St. Kitts

Sustainably designed with local materials and unique water features throughout, Park Hyatt St. Kitts echoes the island's rich heritage and culture, and seamlessly intertwines contemporary architecture and traditional design.

All 78 rooms and 48 suites overlook the golden sandy beach of Banana Bay with chic décor that provides views of the Caribbean Sea and the islands beyond. Each room has luxurious touches such as private balconies and terraces, local artwork, rain-showers and deep soaking tubs. The three-bedroom Presidential Villa is equipped with a private infinity pool, wellness area, personal butler and private chef.









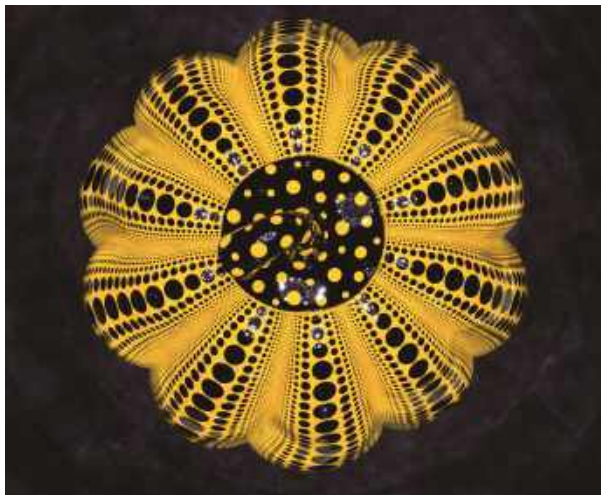


Paradise City Seoul

The luxury hotel is a central part of Paradise City - South Korea's First Integrated Resort, where art, entertainment and relaxation is amalgamated to create an 'Arttainment' resort with a deliberate 'wow' feel.

The contemporary and opulent interiors of the hotel have subtle references to Korea. Furnishings, carpets and lighting throughout were selected to compliment this feel of luxury, emphasised with sophisticated tone on tone colours and glass elements.

Dramatic art pieces have been used throughout to enhance the impact of the big spaces.









Park Hyatt Mallorca

Park Hyatt's first destination resort in Europe. The recreation of an authentic Mallorquín village style resort with 142 rooms and suites, public spaces, spa and adjacent country club.

The aesthetic is residential classic contemporary with a genuine 'Sense of Place'. The interior design reflects the strong authentic relationship with the external architecture. It was important that the resort should not dominate the landscape but instead allow the stunning backdrop of the valley and the mountainous woodlands to take centre stage.







St. Regis Langkawi

The client's vision was for a grand Mansion house that offered a unique alternative to the more traditional laid back resorts that can be found on the island.

The common vernacular architecture and thatched roofs were avoided, instead a unique and dominating structure stands - a statement of quality, permanence and longevity.

With the guestrooms, a slight difference in styling is offered, with more formal and grand rooms located inside the main Mansion building and more relaxed rooms outside located in the lagoon areas and above the sea, all with extensive external balconies so guests can make the most of their beautiful surroundings.



St. Regis Langkawi



Resorts and spas





Project development











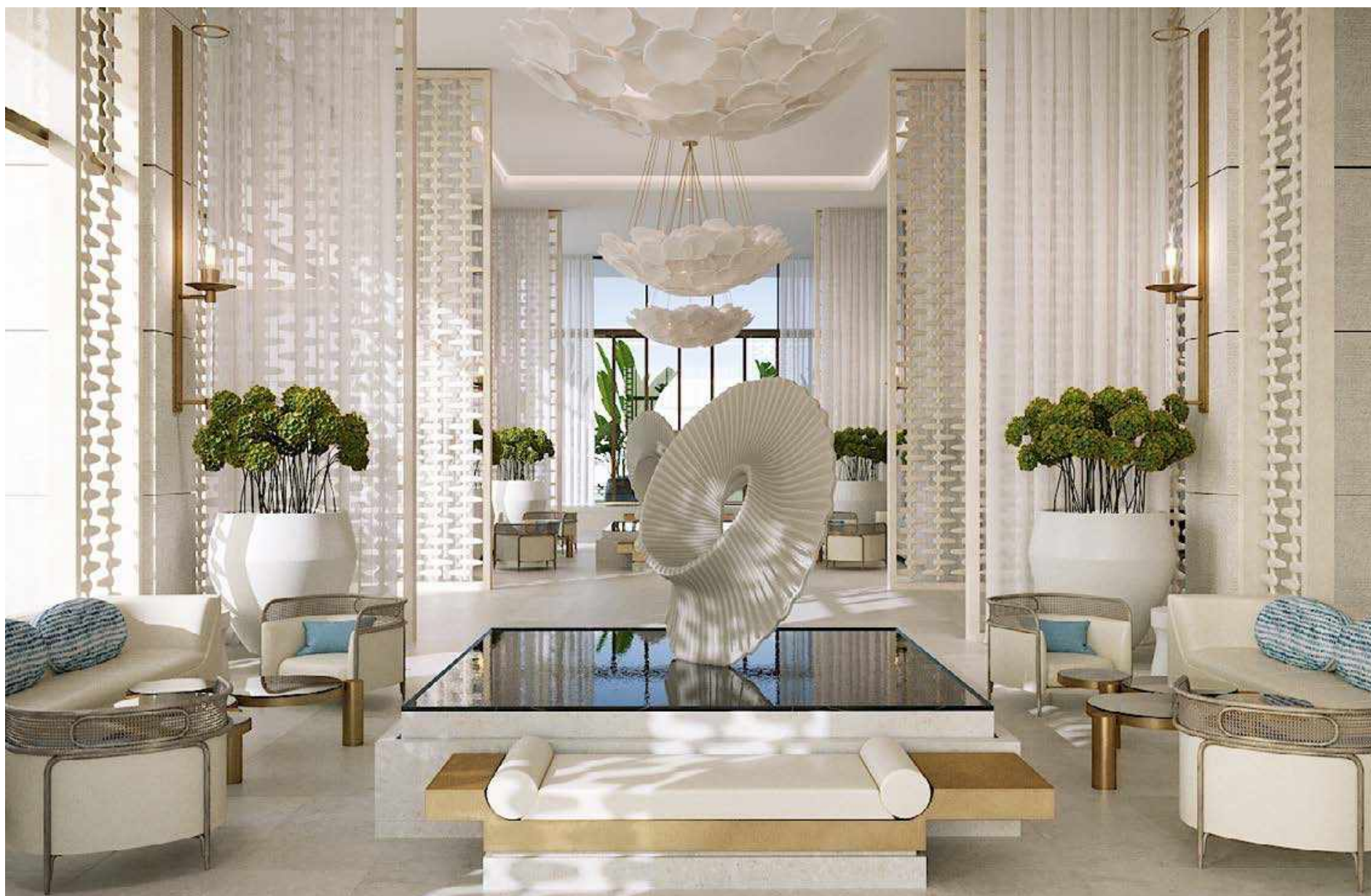


















Awards



Awards

2020

The International Hotel & Property Awards
The Ritz-Carlton Berlin
— Winner: Hotel Over 200 Rooms – Europe

2019

SBID Awards
Belmond Cadogan
— Winner: Hotel Bedroom & Suites Design

AHEAD Awards
Belmond Cadogan
— Winner: Lobby & Public Spaces

2018

The Creative Spark Award
Corinthia Brussels
— Winner: Creative Spark Berlin

Caribbean Travel Awards
Park Hyatt St. Kitts
— Winner: New Hotel of the Year

Travel and Leisure's World's Best Hotels
Park Hyatt St. Kitts
— Winner: Editor's Top Pick

The International Hotel & Property Awards
St. Regis Langkawi
— Winner: Hotel Under 200 Rooms – Asia Pacific

Travel and Leisure's World's Best Hotels
One&Only Le Saint Géran, Mauritius
— Winner: Editor's Top Pick

Campaign Agency of The Year
— Winner: Independent Agency of the year

2017

The Asia Pacific Property Awards
St Regis Langkawi
— Winner: Best Hotel Interior - Malaysia

The International Hotel and Property Awards
St Regis Langkawi
— Winner: Hotel under 200 Rooms Asia Pacific

2016

The International Property Awards
St Regis Langkawi
— Winner: Best International Hotel Interior

World Spa Awards
ESPA Life at Corinthia
— Winner: Best Hotel Spa in England
— Winner: Best Spa in England
Four Seasons Riyadh
— Winner: World's Best Male Spa

2015

The International Property Awards
Waldorf Astoria Amsterdam
— Winner: Best Hotel Interior, The Netherlands

2014

The International Property Awards
St. Regis Osaka
— Winner: Best Hotel Interior (Global)

The Asia Pacific Property Awards
W Taipei
— Winner: Hotel Interior, Taipei
Palace Hotel Tokyo
— Winner: Hotel Interior, Tokyo

European Hotel Design Awards
The Rosebery Room
Mandarin Oriental Hyde Park
— Winner: Best Café / Bar / All Day Dining
Hilton Bomonti Istanbul
— Shortlisted: Best Spa Hotel
Waldorf Astoria Amsterdam
— Shortlisted: Best Renovation

Gold Key Awards
Hilton Bomonti Istanbul
— Winner: Best Upscale Hotel (International)

The International Hotel And Property Awards
St. Regis Osaka
— Winner: Best Hotel Lobby / Lounge
Olive Bay Hotel Nagasaki
— Shortlisted: Hotel under 50 Rooms
Corinthia London: Whitehall Suite
— Shortlisted: Best Hotel Suite

2013

Travel & Leisure Design Awards
Palace Hotel Tokyo
— Winner: Hotel over 100 Rooms

Asia-Pacific Awards
Palace Hotel Tokyo
— Winner: Hotel over 200 Rooms
W Taipei
— Shortlisted: Hotel over 200 Rooms
St. Regis Osaka
— Shortlisted: Hotel 50-200 Rooms

2012

The International Hotel And Property Awards
Corinthia Hotel London
— Winner: Hotel over 200 Rooms
ESPA Life Spa
— Shortlisted: Spa category

European Hotel Design Awards
Corinthia Hotel London /
Whitehall Penthouse Suite
— Winner: Suite Category
Explorer Penthouse Suite
— Shortlisted: Suite Category
Hamilton Penthouse Suite
— Shortlisted: Suite Category
Musicians Penthouse Suite
— Shortlisted: Suite Category
Conde Nast Traveler – Gold List
St. Pancras Renaissance London
— Best for Location
Corinthia Hotel London
— Best for Ambience and Design

Restaurant And Bar Awards
Northall Restaurant London
— Shortlisted
Booking Office Bar London
— Shortlisted

2011

European Hotel Design Awards
St. Pancras Renaissance London
— Winner: Bar / All Day Dining
— Finalist: Interior Design of the Year Category
— Finalist: Lobby / Public Areas Category
— Finalist: Guestrooms Category
Riverview Suite, Corinthia London
— Finalist: Suite Category
Corinthia London
— Finalist: Lobby / Public Areas Category
— Finalist: Bedrooms & Bathrooms Category
ESPA Life Spa London
— Finalist: Spa Category
Northall Restaurant London
— Finalist: Bar / All Day Dining Category

European Hospitality Awards
St. Pancras Renaissance London
— Overall winner of the Year
— Refurbishment of the Year
ESPA Life Spa London
— Hotel Spa of the Year

Recently Completed Projects

Australia

Langham Hotel Sydney
— Client: Langham Hotels

China

W Hotel Shanghai
— Client: APP - China
Amari Hotel Yangshou
— Client: Yitian Group
Langham Hotel Hong Kong
— Client: Langham Hotels
Raffles Hotel Roof Club Shenzhen
— Interior Design

Germany

Ritz Carlton Hotel Berlin
— Interior Design

Hungary

Ritz Carlton Hotel Budapest
— Client: Adria Palace Ingatlanhasznosito Kft

Japan

Keio Plaza (Premier Floors), Tokyo
— Client: Nikken Sekkei Ltd
Olive Bay Hotel Nagasaki
— Client: Oshima Shipbuilding Co. Ltd
Palace Hotel Tokyo
— Client: MEC Design International
St Regis Hotel Osaka
— Client: Nikken Sekkei Co. Ltd
JW Marriott Hotel Nara
— Interior Design
ANA InterContinental Ishigaki
— Interior Design

Jordan

Fairmont Hotel Amman
— Client: Injaz for Development
& Investment Co.

Korea

Paradise City Hotel Seoul
— Interior Design
Lotte Hotel Seoul
— Interior Design

Malaysia

St. Regis Hotel Kuala Lumpur
— Client: One IFC Residences Sdn Bhd
St. Regis Hotel Langkawi
— Client: Integrated Nautical Resort Sdn Bhd

Mauritius

One&Only Le Saint Géran
— Interior Design

Morocco

Four Seasons Hotel Casablanca
— Client: Inveravante, Avda. Linares

Netherlands

Waldorf Astoria Hotel Amsterdam
— Client: Waldorf Astoria

Norway

Continental Hotel Oslo
— Interior Design & Master Planning

Spain

Park Hyatt Hotel Mallorca
— Client: Cap Vermell Hotel
Proyectos y Promociones

St Kitts and Nevis

Park Hyatt Hotel St. Kitts
— Client: Easy Merit Holdings Ltd.

Taiwan

Westin Tashee Resort, Taoyuan
Client: Li Fu Investment Co., Ltd
W Hotel Taipei
— Client: Times Square International Ltd

United Kingdom

Harrods
— Interior Retail Design
Cadogan Hotel, London
— Interior Design
One Park Drive, London
— Client: Canary Wharf, One Park Drive Ltd.
Mandarin Oriental Hotel London
(Rosebery Room)
— Client: Mandarin Oriental
Corinthia Hotel London
— Client: MEC Design International

Ongoing Works (2017 – 2029)

Belgium

Corinthia Grand Hotel Astoria, Brussels
— Interior Design)

China

JW Marriott Hotel Guangzhou
— Interior Design
Waldorf Astoria Sanya
— Interior Design

India

Dial Conference Centre & Hotel, Delhi
— Interior Design

Indonesia

InterContinental Hotel Surabaya
— Interior Design
Four Seasons Hotel Jakarta
— Interior Design
Waldorf Astoria Hotel Jakarta
— Concept Development
Sanitaryware Exhibition

Japan

InterContinental Hotel Okinawa
— Interior Design
Keio Plaza Hotel, Tokyo
— Interior Design
Okura Hotel Tokyo
— Interior Design

Korea

Sheraton Hotel Busan, Haeundae
— Interior Design
Major South Korean department store,
beauty and retail
— Interior Retail Design

Malaysia

Park Hyatt Hotel Kuala Lumpur
— Interior Design

Malta

Corinthia Hotel Malta
— Master Planning & Interior Design

Netherlands

Hilton Hotel Amsterdam
— Interior Design
Okura Hotel Amsterdam
— Interior Design

Philippines

New hotel and casino resort
— Interior Design

Romania

New build Bucharest city hotel
— Interior Design

Switzerland

Hyatt Regency Hotel Zurich
— Interior Design)

Turkey

Four Seasons Bodrum
- Interior

United Arab Emirates

New build luxury hotel in new iconic Dubai tower
— Interior Design
The Royal Atlantis Hotel Dubai
— Interior Design

United Kingdom

Grosvenor House Hotel, London
— Interior Design
New build central London hotel
— Interior Design

Historic Portfolio

Australia

Conrad Hotel & Treasury Casino, Brisbane
— Client: Jupiter's Ltd

Brazil

Palacio Tangara Hotel & Spa, Sao Paulo
— Client: Birmann S.A.

China

St. Regis, Changsha
— Client: St Regis Changsha
W Hotel, Changsha
— Client: Hunan Yunda Real Estate Development Co.

Czech Republic

Corinthia Park Towers, Prague
— Client: Corinthia Group of Companies
Palace Hotel Prague
— Client: PM International Furnishings
Radisson SAS Hotel Prague
— Client: Crown WSF

Democratic Republic of Congo

InterContinental Hotel Kinshasa
— Client: Grand Hotels du Zaire

Denmark

Hotel D'Angleterre Copenhagen
— Client: The Remmen Foundation
Plaza Hotel, Copenhagen
— Client: Royal Classic Hotels

Egypt

Conrad Cairo International
— Client: ICTI
Ramses Hilton Hotel Cairo
— Client: Ramses Hilton
Sheraton Hotel Cairo
— Client: National Company for Tourism & Hotels

Ethiopia

Sheraton Grand Hotel Addis Ababa
— Client: Midroc Construction Ethiopia Plc

Finland

InterContinental Hotel Helsinki
— Client: Nordic Hotel Oy

France

Hotel Bel-air Cap Ferrat
— Interior Design

Germany

Hilton Dusseldorf
— Client: Hilton Dusseldorf
JAL Lounge Frankfurt
— Client: Japan Airlines International Co. Ltd

Ghana

Sheraton Ambassador Hotel, Accra
— Client: Ambassador Hotels Ltd

Greece

Navarino Resort, Messinia
— Client: Costamare Shipping Company S.A.

Hungary

Chateau Szent Gaal, Szekszard
— Client: Joseph Kovacs, Aliscavin Co. Ltd
Corinthia Hotel Budapest
— Client: Corinthia Group of Companies
InterContinental Hotel Budapest
— Client: Inter-Continental Hotels

India

Grand Hyatt Goa
— Client: Turf Estate
Park Hyatt Mumbai
— Client: DB Hospitality

Ireland

Ashford Castle, Country Mayo
— Client: Dowmar Securities Inc.
Conrad Hotel Dublin
— Client: Earlsfort Centre Development
Kingsley Hotel, Cork
— Client: Clydagh Developments

Italy

Mellini Hotel, Rome
— Client: Mellini 90 S.R.L.
Monastero Santa Rosa Hotel & Spa, Amalfi Coast
— Client: Santa Rosa SRL

Japan

ANA Hotel, Tokyo
— Client: All Nippon Airlines
Conrad Tokyo
— Client: Conrad Tokyo
Crowne Plaza Metropolitan Hotel, Tokyo
— Client: JR East Design Corp.
JAL Lounge Tokyo
— Client: Japan Airlines International Co. Ltd
Keio Plaza Hotel, Tokyo
— Client: Nikken Sekkei Ltd
Kobe Harbourland Fitness Centre
— Client: Oliver Corporation
Maple Point Golf Club, Yamanashi
— Client: IGA Golf Resorts
Nagoya Kanko Hotel
— Client: Nagoya Kanko Hotel
Nikko Hotel Tokyo
— Client: MEC Design International
Portopia Hotel, Kobe
— Client: Portopia Hotel
Royal Park Hotel Yokohama
— Client: MEC Design International
Satellite Lounge Narita Airport, Tokyo
— Client: Azusa Sekkei Co. Limited

Jordan

Mövenpick Resort & Spa Dead Sea, Amman
— Client: Levant Hotels & Tourism Co. Ltd
Mövenpick Hotel Petra
— Client: Lebant Hotels & Tourism Co. Ltd
Hyatt Amman
— Interior Design

Historic Portfolio

Kenya

InterContinental Hotel Nairobi
— Client: Inter-Continental Hotels

Latvia

Hyatt Regency Riga
Client: Tango Projects Limited

Morocco

Four Seasons Marrakech
— Client: EHC Maroc SA

Nigeria

Jasper Hotel, Abuja
— Client: Newman Investment Company Ltd.

Philippines

Buko Bar, Shangri-La Cebu
— Client: Shangri-La Hotels & Resorts

Portugal

Corinthia Hotel Lisbon
— Client: Corinthia Group of Companies
Hilton Alvor
— Client: H.N. Company/Hilton

Russia

Corinthia Hotel, St. Petersburg
— Client: International Hotel Investments

Saudi Arabia

Sheraton Hotel Taiba, Medina
— Client: Rwafid Holding Company

Spain

Caesars Palace Restaurant, Madrid
— Client: Caesars Hotel Castilla La Mancha S.L.U
Hyatt La Manga Club Resort, Murcia
— Client: Bovis Abroad
Park Hyatt Hotel Marbella Casares, Marbella
— Client: EveMarina Hotels S.L.

Thailand

Shangri-La Hotel Phuket
— Client: The Luxury Phuket Co. Ltd /
Durham Holdings

Turkey

Conrad International Hotel Istanbul
— Client: Conrad Hotels International
Hilton Bomonti Hotel Istanbul
— Client: IC Bomonti
Hyatt Regency Hotel Istanbul
— Client: Bosphorus Otelcilik ve Yatirim LTD STI
InterContinental Hotel Istanbul
— Client: Inter-Continental Hotels
Select Maris Hotel, Marmaris
— Client: Select Maris Hotel

Ukraine

Hilton Hotel Kyiv
— Client: St. Sophia Homes

United Arab Emirates

Chairman's Villa Dubai
— Client: Private Client
Dubai Show Flats / Residences
— Client: Al Futtaim Real Estate Company L.L.C
Grand Hyatt Abu Dhabi
— Client: Cansult Limited
Hyatt Regency Abu Dhabi
— Client: Technical Studies Bureau Int.
InterContinental Festival City, Dubai
— Client: Al Futtaim
Ritz Carlton Hotel Dubai
— Client: Mohammed Saeed Almulla & Sons L.L.C

United Kingdom

The Bailey's Hotel, London
— Client: CDL Hotels Group
Battersea Grand Hyatt, London
— Client: Parkview
BBC Superstar Dressing Room, London
— Client: BBC Resources
8 Bedford Square, London
— Client: Grenville Properties Ltd.
Berners Hotel, London
— Client: Berners BVI Limited
Blackfriars Crowne Plaza, London
— Client: Crowne Plaza
Chester's Casino, London
— Client: City Clubs Ltd
Claridge's Hotel, London
— Client: Savoy Hotels Plc
Corinthian Hotel, London
— Client: NLI Hotels Limited
55 Cumberland Terrace, London
— Client: Lord & Lady Levine
Grosvenor House Hotel, London
— Client: RBS Development Co. Ltd
InterContinental Britannia, London
— Client: Inter-Continental Hotels
InterContinental Hotel Mayfair, London
— Client: Inter-Continental Hotels
Le Meridien Hotel, London
— Client: Forte Hotels
Kohlberg Kravis Roberts Headquarters, London
— Client: Kohlberg Kravis Roberts & Co. Ltd.
Overtons Restaurant, London
— Client: Overtons Restaurant Ltd
Sheraton Hotel Belgravia, London
— Client: Sheraton Corporation
Threadneedles Hotel, London
— Client: The Eton Group
St Pancras Renaissance Hotel, London
— Client: Manhattan Loft Corporation

London

Lymehouse Studios,
2nd Floor, 30-31 Lyme Street,
London, NW1 0EE, United Kingdom
T +44 (0)20 7482 0054
F +44 (0)20 7482 0064
E london@thega-group.com



Budapest

Muzeum Korut 7 1/7
Budapest 1053, Hungary
T +36 (1) 266 9766
F +36 (1) 267 0946
E budapestoffice@thega-group.com

Kuala Lumpur

#1-02 One KL, No. 6 Jalan Pinang
50450 Kuala Lumpur, Malaysia
T +60 (3) 2300 3441
F +60 (3) 2300 3442
E kl@thega-group.com

Shanghai

Floor 5, No. 687 Dong Da Ming Road
Shanghai 200080, P.R. China
T +86 21 6071 3818
F +86 21 6072 3817
E shanghai@thega-group.com